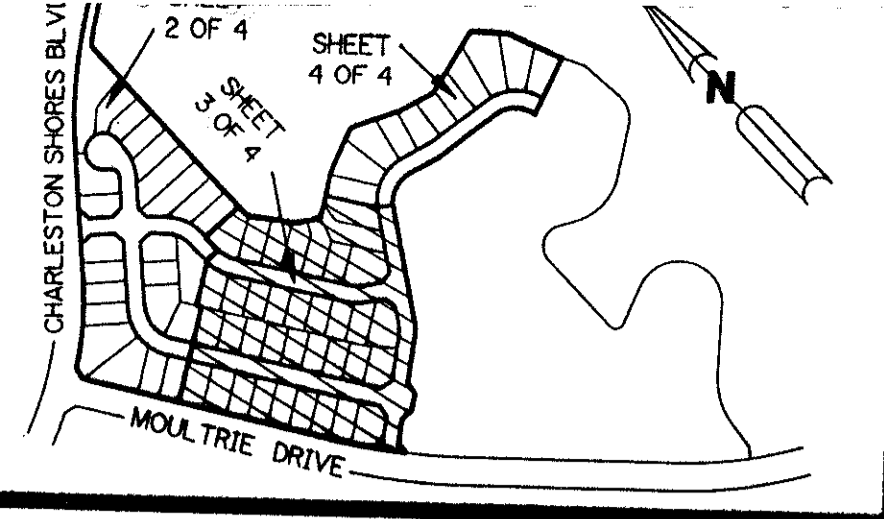


LAKE CHARLESTON - TRACTS T & V - PLAT ONE

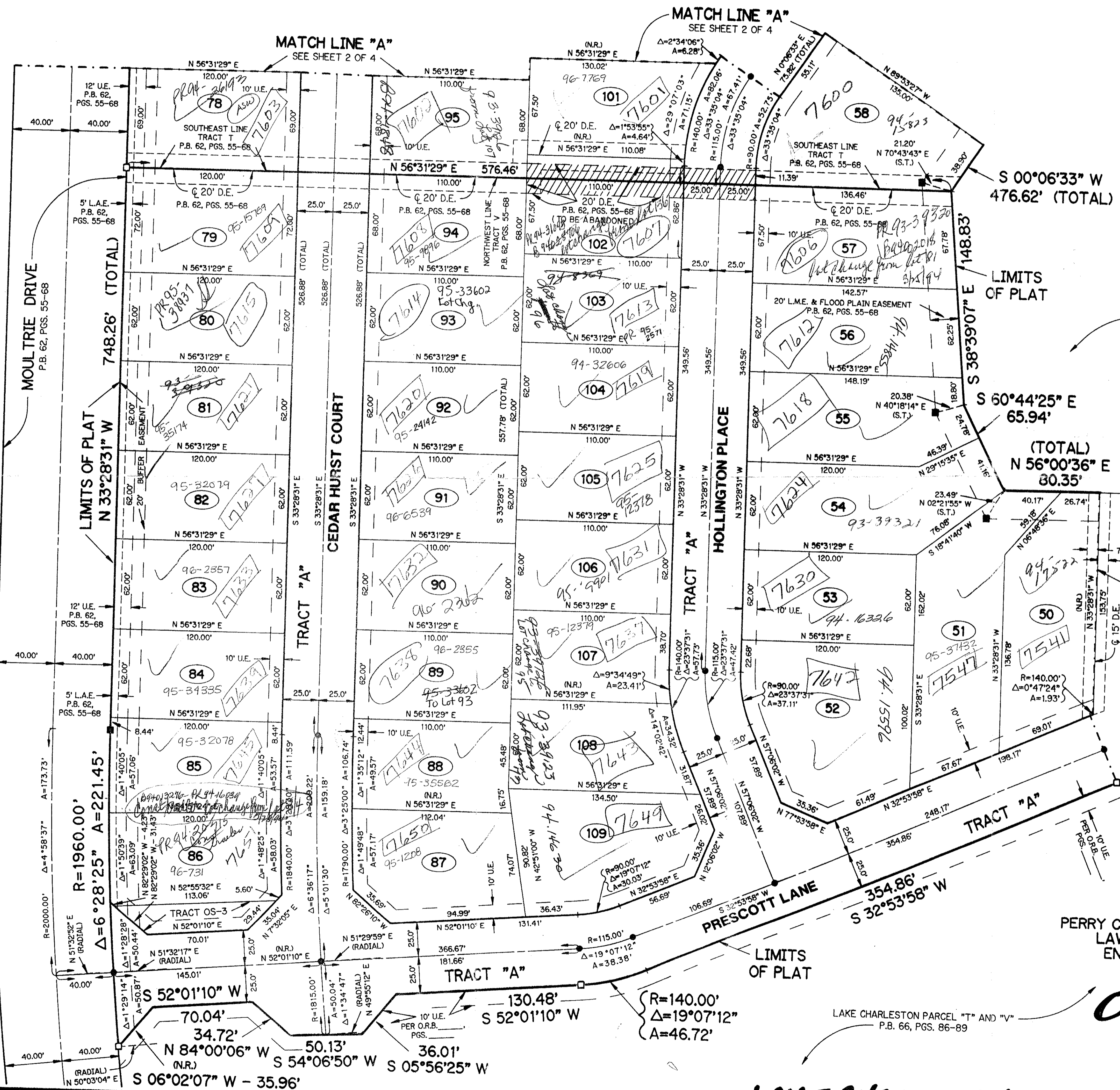
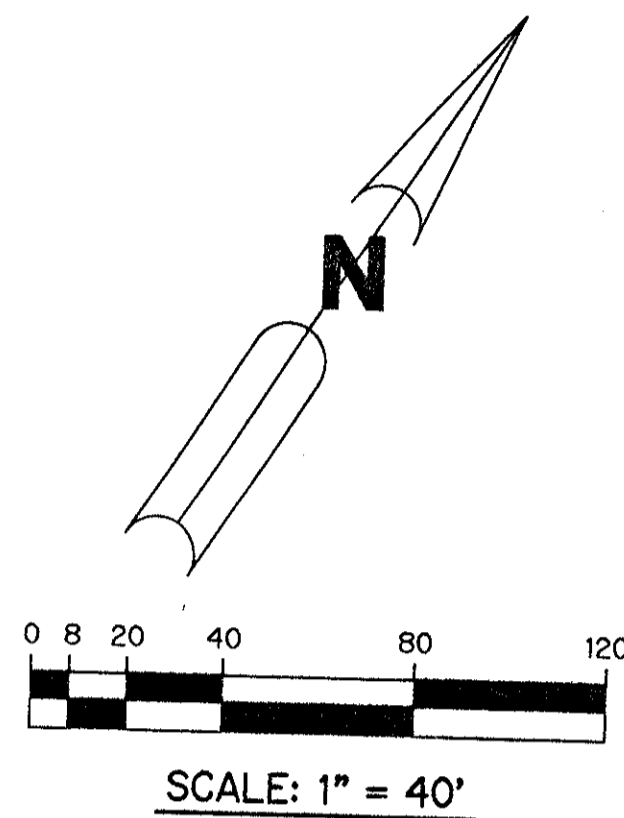
BEING A REPLAT OF A PORTION OF TRACTS T AND V OF LAKE CHARLESTON PLAT NO.3 AS RECORDED IN PLAT BOOK 62, PAGES 55-68, PUBLIC RECORDS OF PALM BEACH COUNTY, FLORIDA SECTION 9, TOWNSHIP 45 SOUTH, RANGE 42 EAST PALM BEACH COUNTY, FLORIDA

SHEET 3 OF 4

JANUARY, 1993



KEY MAP N.T.S.



LAKE TRACT 5 LAKE CHARLESTON - PLAT NO. 3 P.B. 62, PGS. 55-68 (DRAINAGE EASEMENT) MAINTAINED BY LAKE CHARLESTON MAINTENANCE ASSOCIATION, INC.

NOTE: THE FLOODPLAIN EASEMENT WITHIN THE WATER MANAGEMENT TRACT IS SUBJECT TO FLOODING DURING THE THREE YEAR, TWENTY-FOUR HOUR RAINFALL EVENT.

PET. 86-96A ALLOC. #0001 5/2/2/E

THIS INSTRUMENT PREPARED BY PERRY C. WHITE, P.L.S. 4213 STATE OF FLORIDA LAWSON, NOBLE AND ASSOCIATES, INC. ENGINEERS PLANNERS SURVEYORS WEST PALM BEACH, FLORIDA

0533-019 71/73

LAKE CHARLESTON - TRACTS T & V - PLAT 1 SHEET 3 OF 4

- LEGEND:**
- - PERMANENT REFERENCE MONUMENT, PLS #4213 - SET
 - - PERMANENT REFERENCE MONUMENT, PLS #4213 - FOUND
 - △ - DELTA ANGLE
 - D.E. - DRAINAGE EASEMENT
 - F.F. - FLOOD PLAIN EASEMENT
 - L.A.E. - LIMITED ACCESS EASEMENT
 - L.M.E. - LAKE MAINTENANCE EASEMENT
 - N.R. - NOT RADIAL
 - O.R. - OFFICIAL RECORD
 - O.R.B. - OFFICIAL RECORD BOOK
 - OS - OPEN SPACE
 - P.B. - PLAT BOOK
 - P.G.S. - PAGES
 - P.L.S. - PROFESSIONAL LAND SURVEYOR
 - P.U.D. - PLANNED UNIT DEVELOPMENT
 - R - RADIUS
 - R.O.W. - RIGHT-OF-WAY
 - S.T. - SURVEY TIE LINE
 - U.E. - UTILITY EASEMENT

Setbacks from inside Bayline from along edge of Lake

BOOK 71 PAGE 71 FLOOD MAP #1854 FLOOD ZONE B QUAD #44 SE 86-96 ZIP CODE 33437 FUD NAME LAKE CHARLESTON TAZ 439